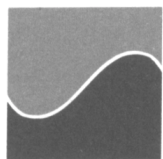
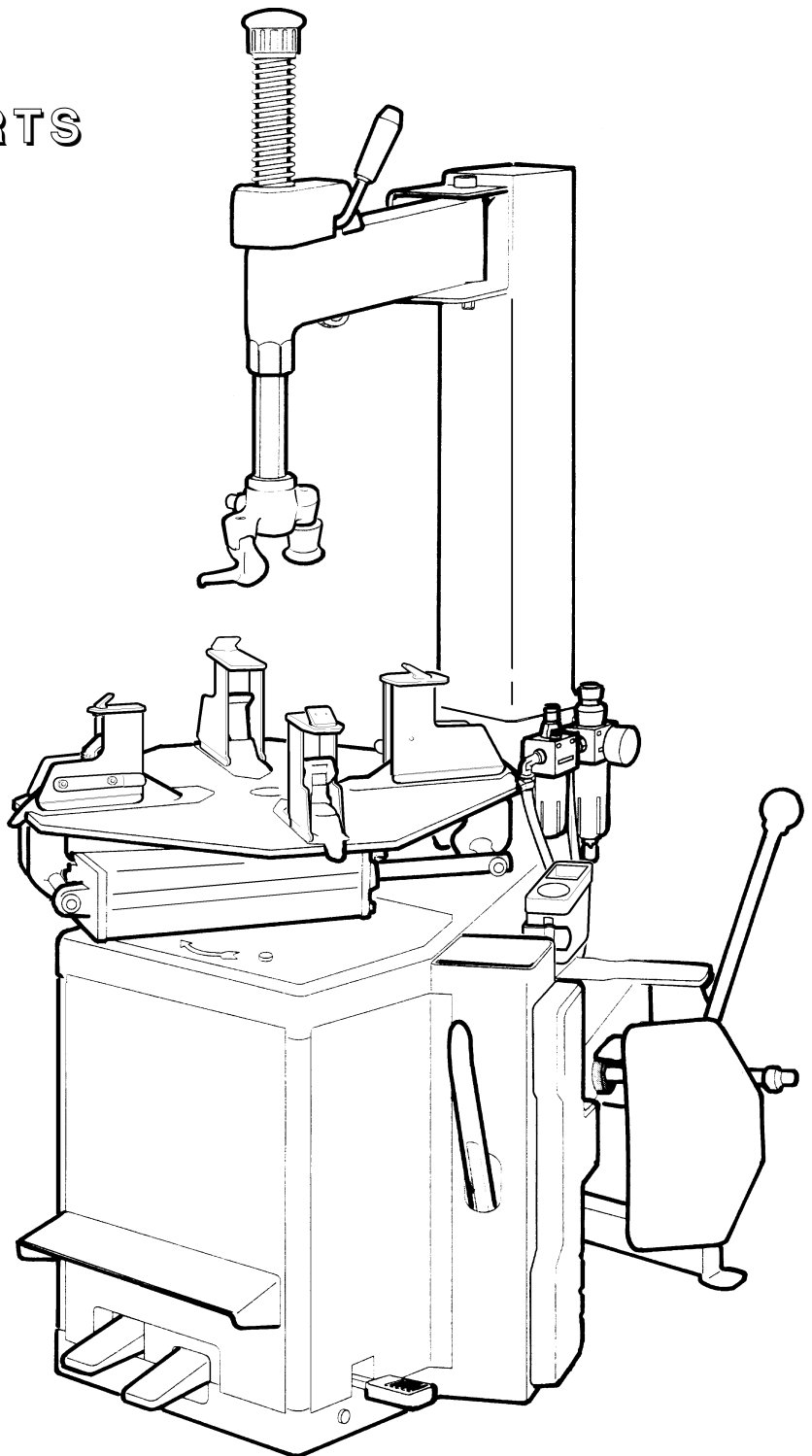


MONTY 455

- SPARE PARTS LIST



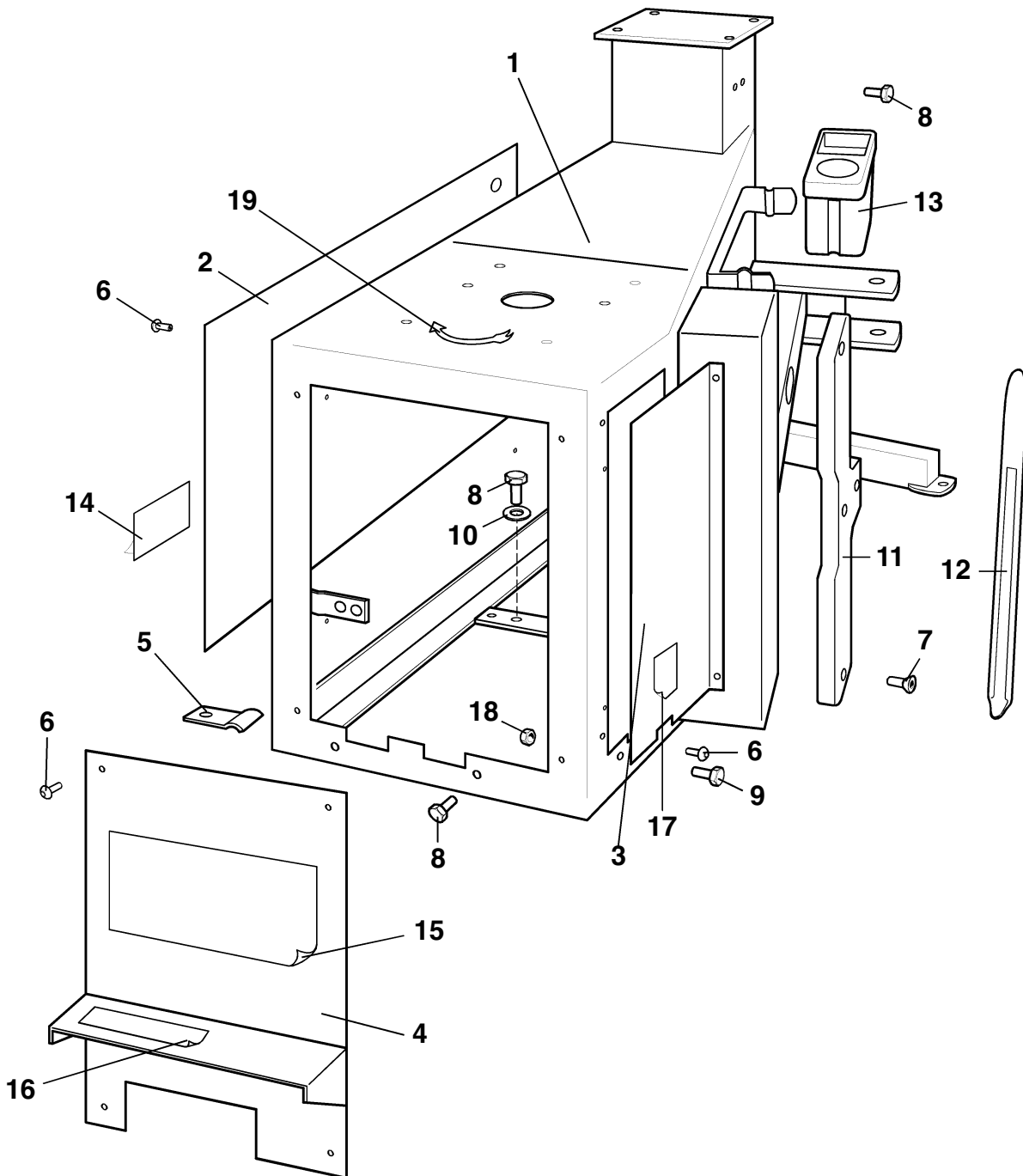
HOFMANN

SPARE PARTS

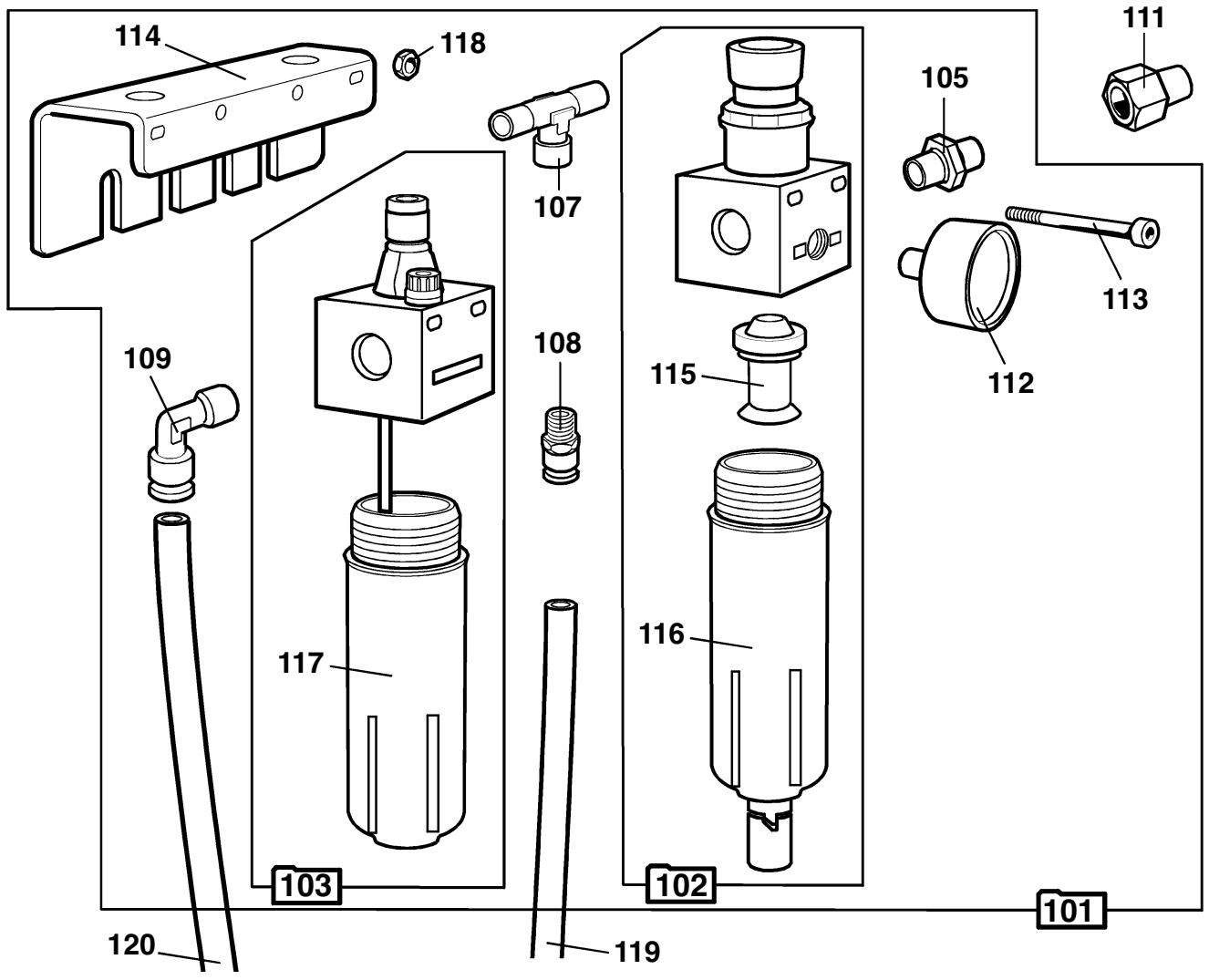
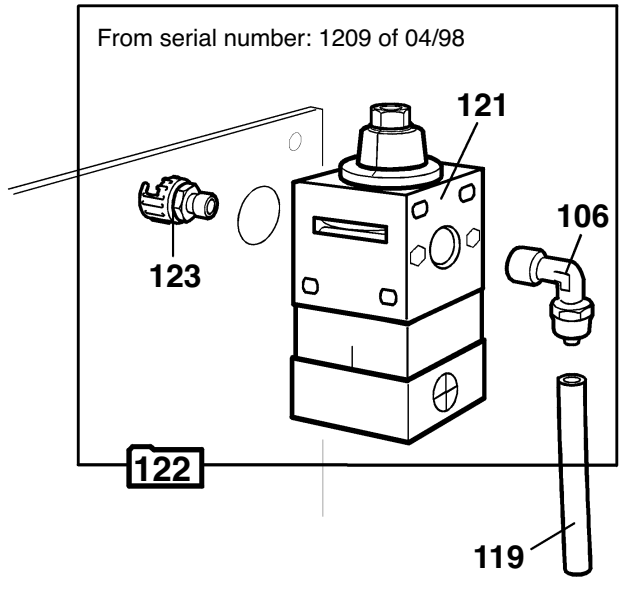
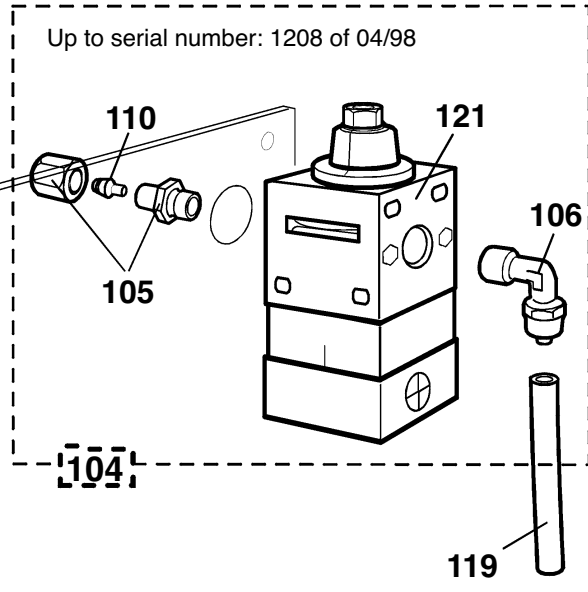
When ordering ALWAYS specify the SERIAL NUMBER of the machine shown on the label placed on the rear of the tyre changer.

Please also specify the REFERENCE and CODE numbers of the spares you require.

BODY

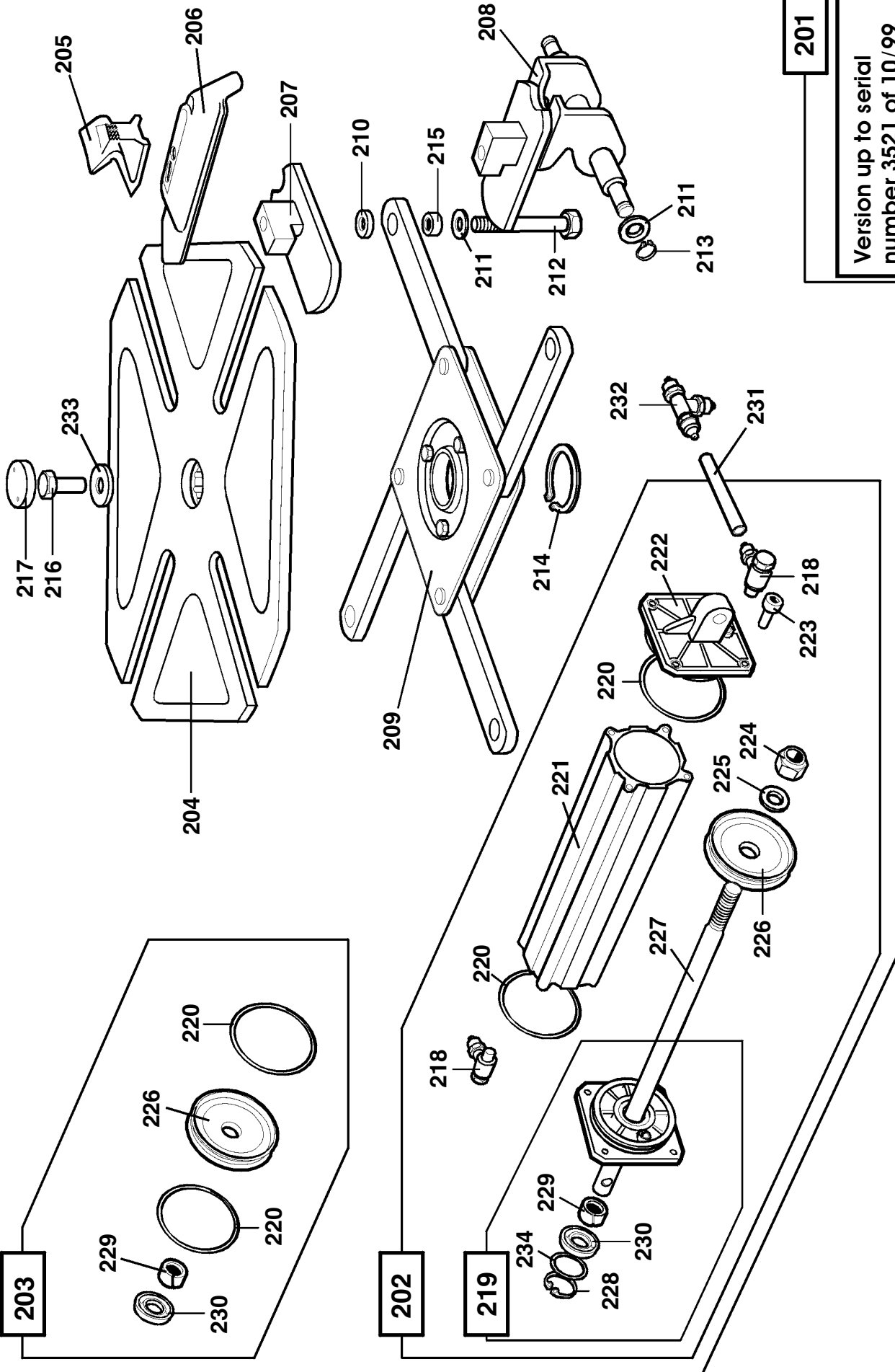


PNEUMATIC SYSTEM

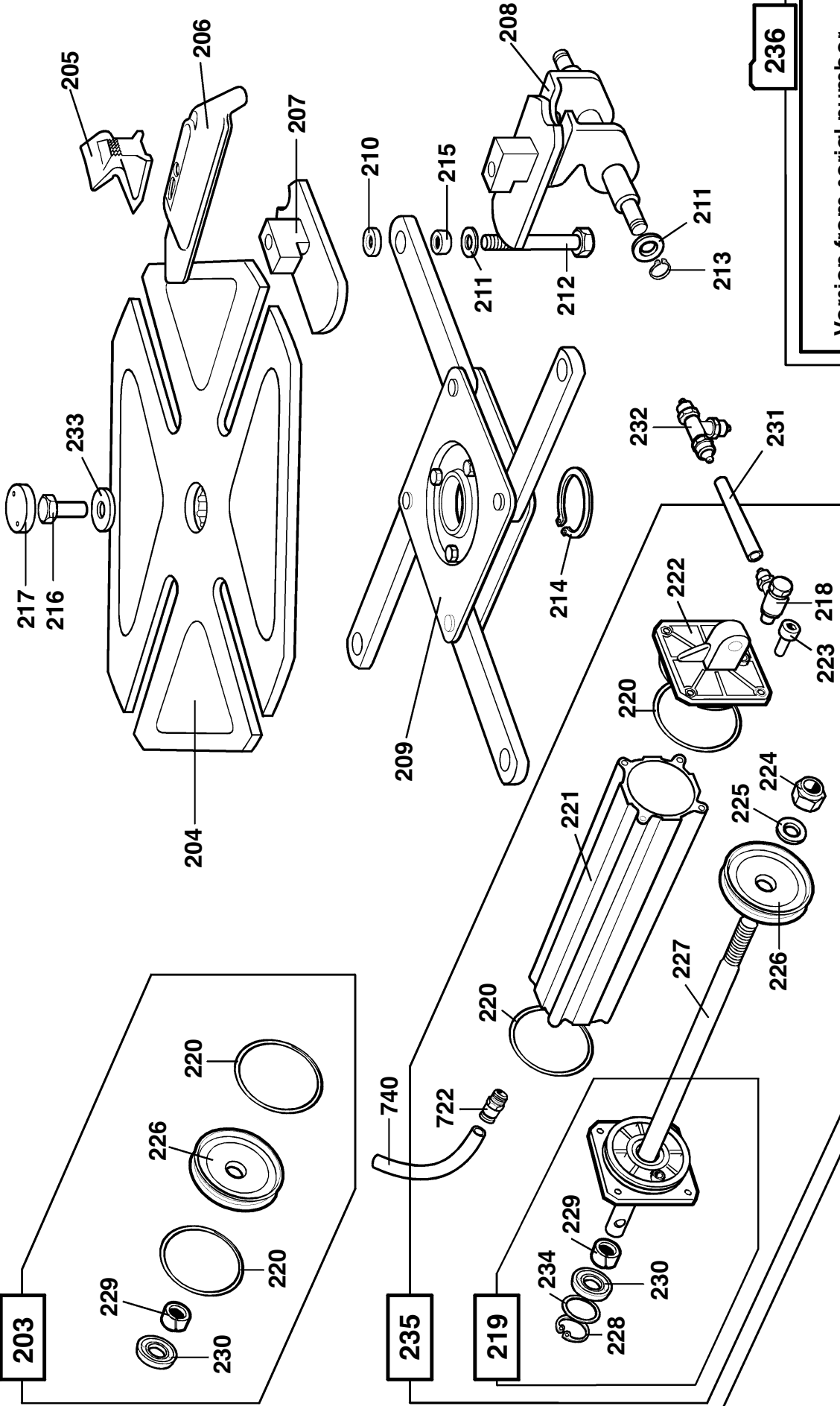


TURNTABLE

Version up to serial number 3521 of 10/99

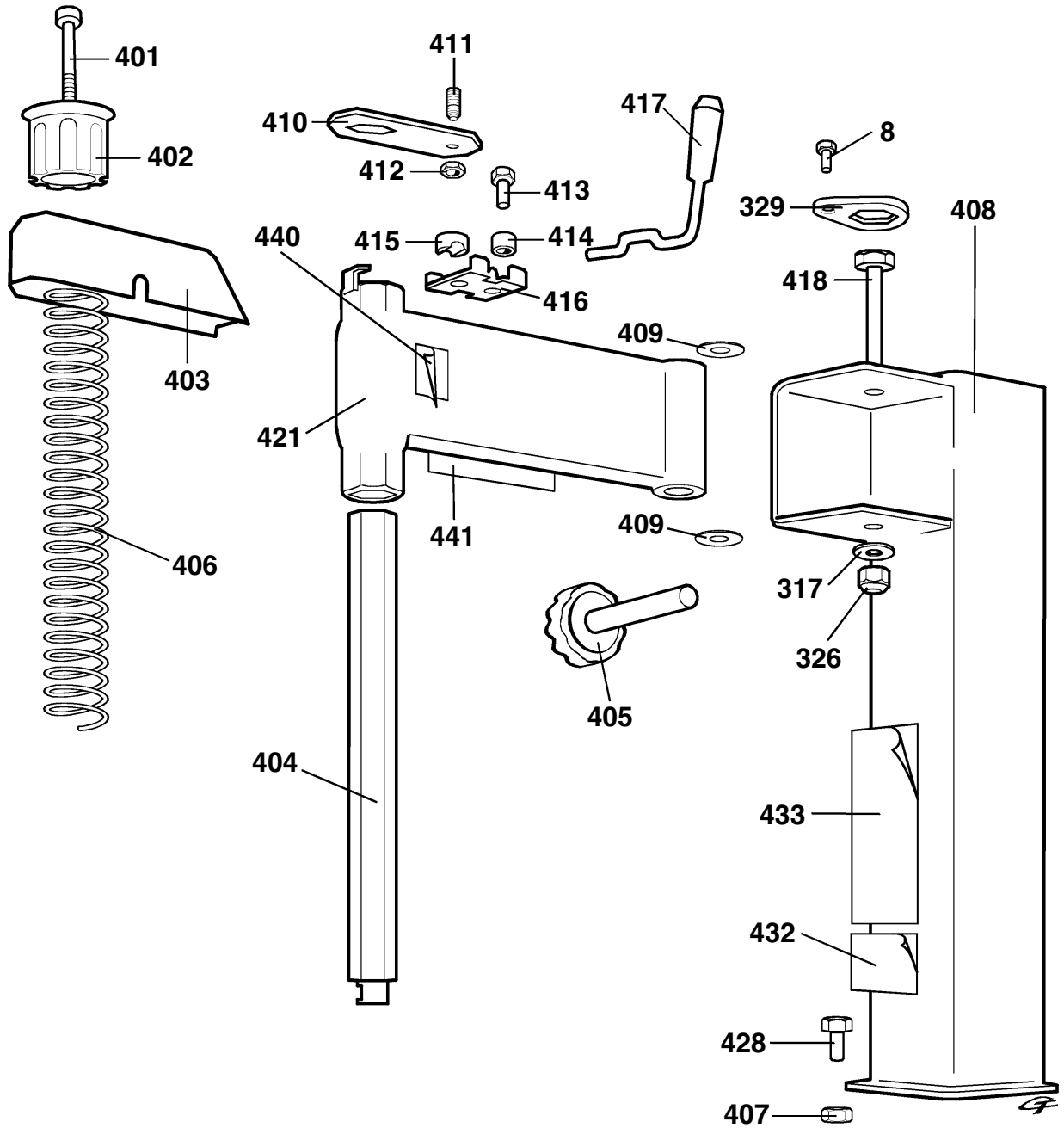


TURNTABLE

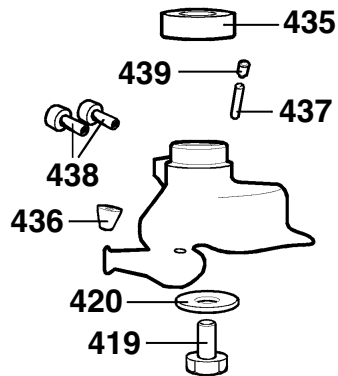


Version from serial number
3522 of 10/99

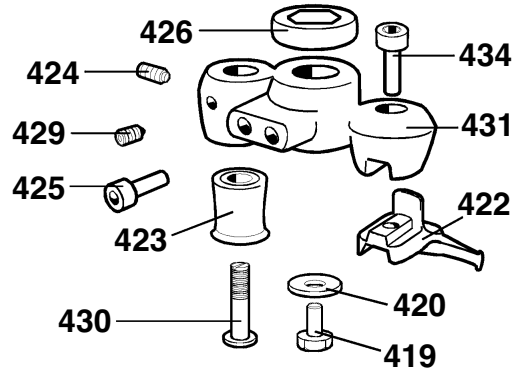
VERTICAL POST



427



Version from serial number
3529 of 10/99

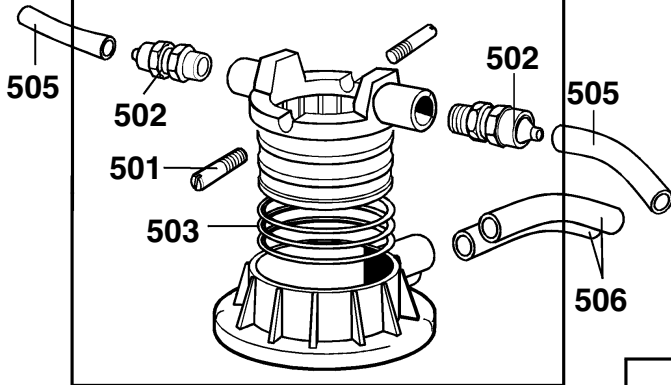


Version up to serial number
3528 of 10/99

GEARBOX

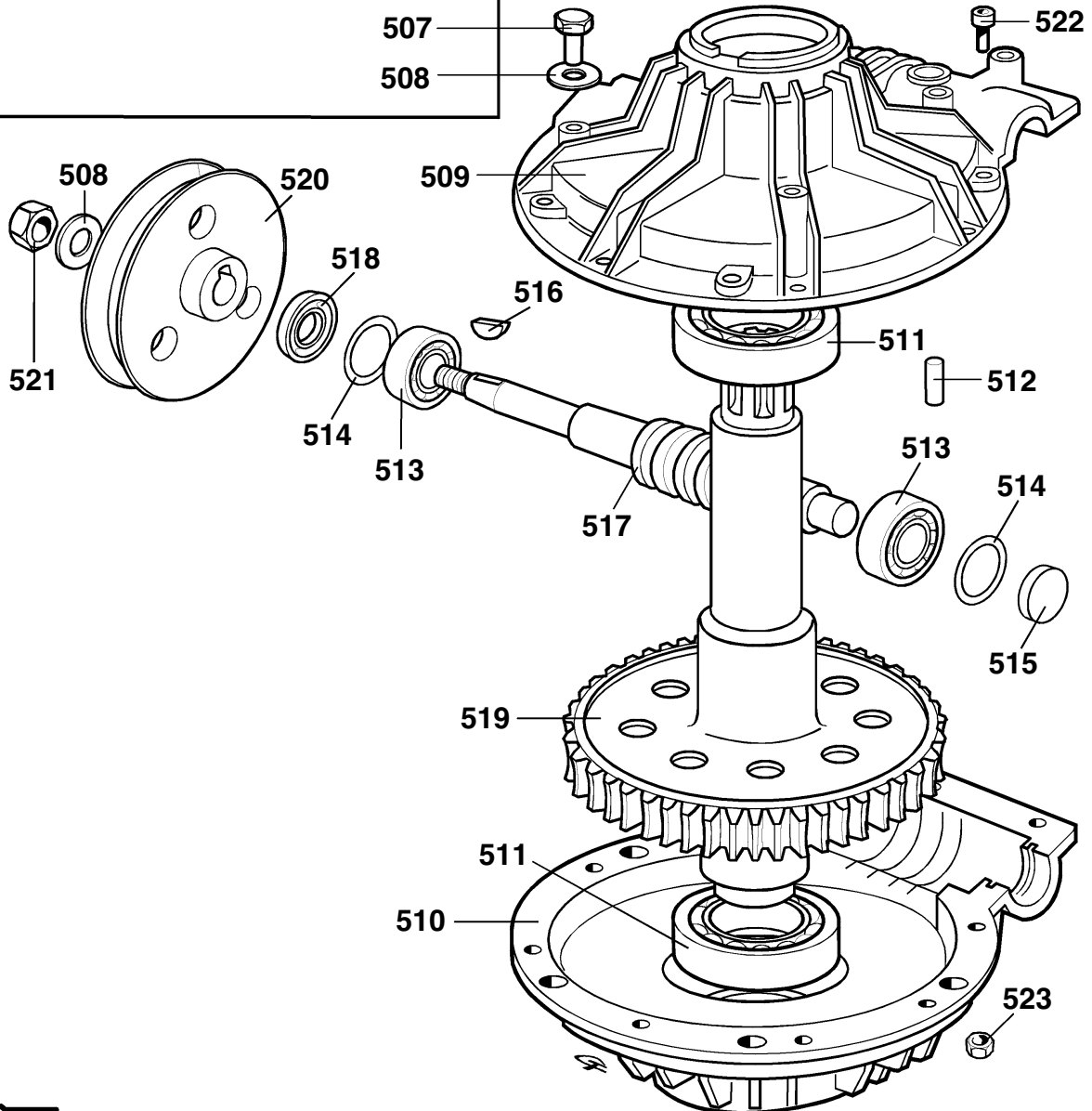
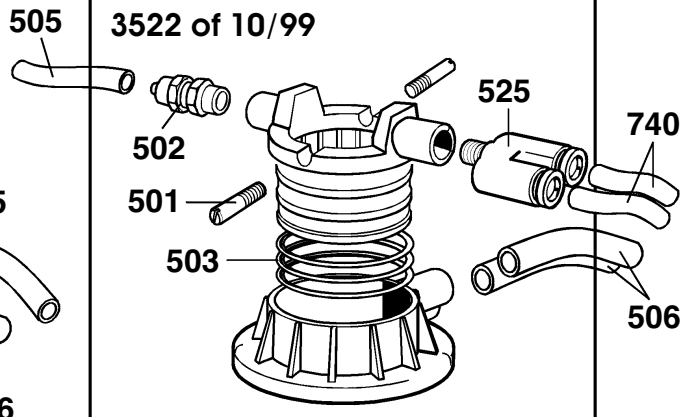
504

Version up to serial number 3521 of 10/99



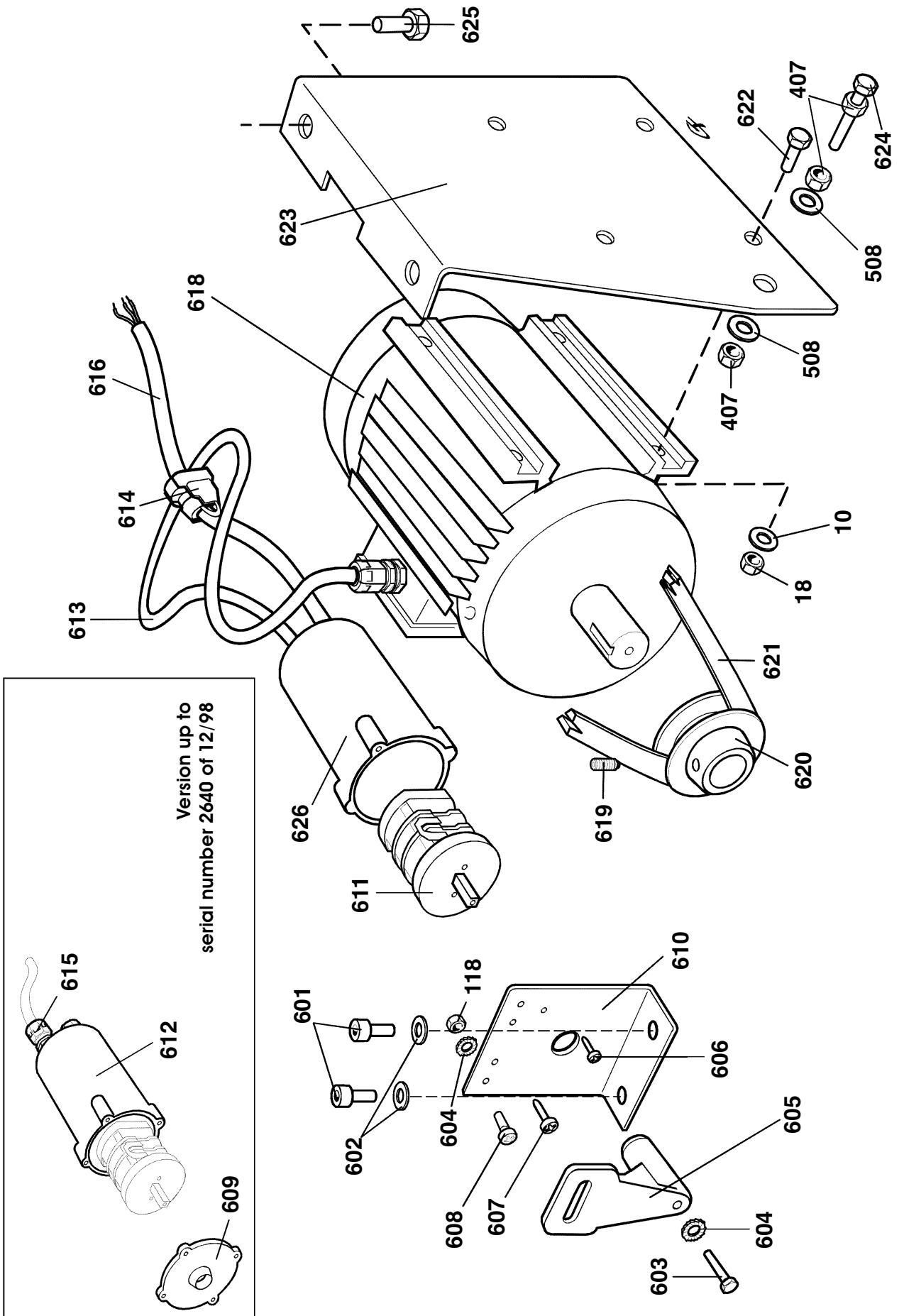
526

Version from serial number 3522 of 10/99

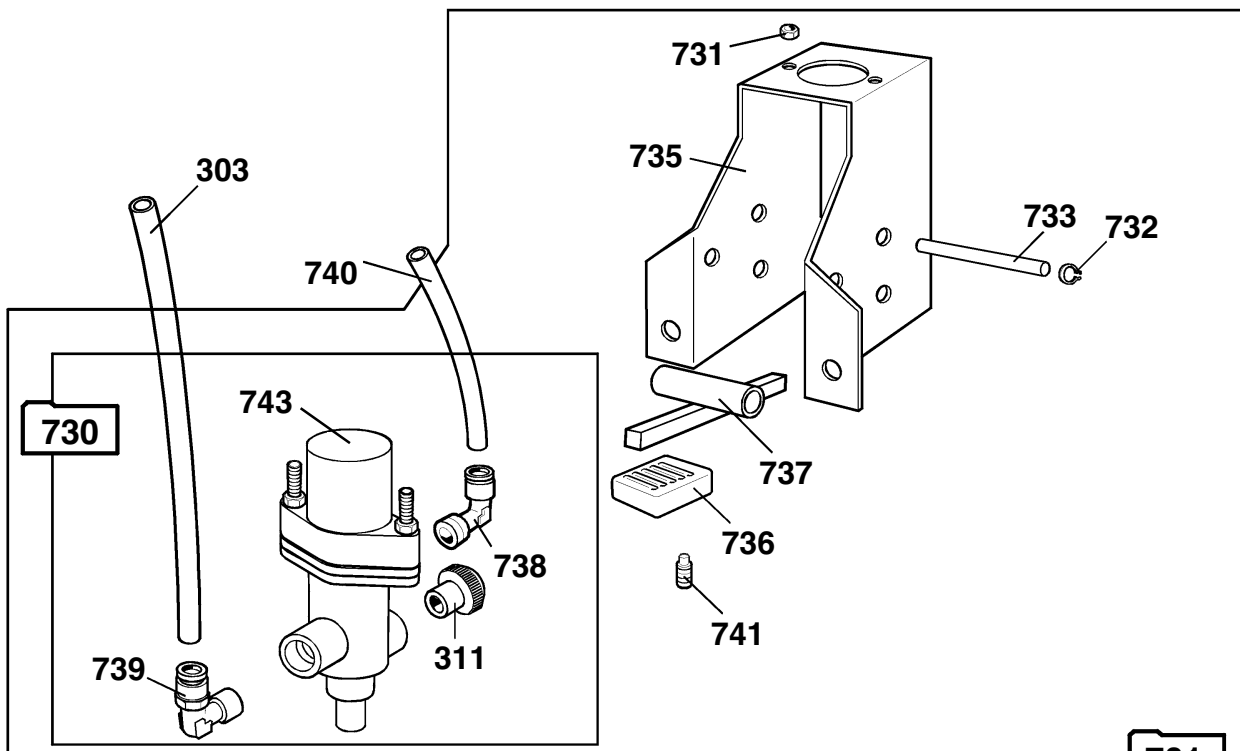


524

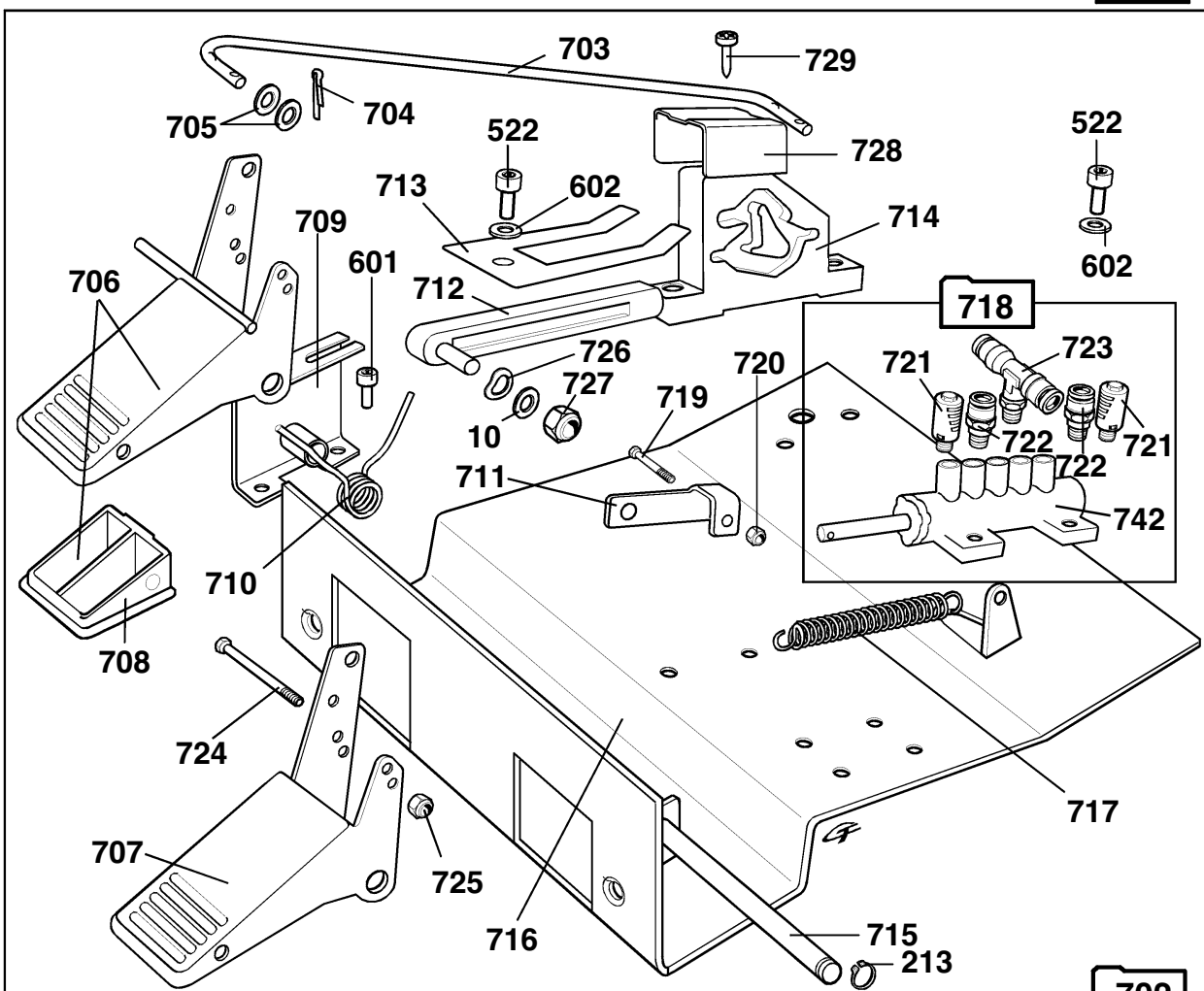
ELECTRIC SYSTEM



PEDALS

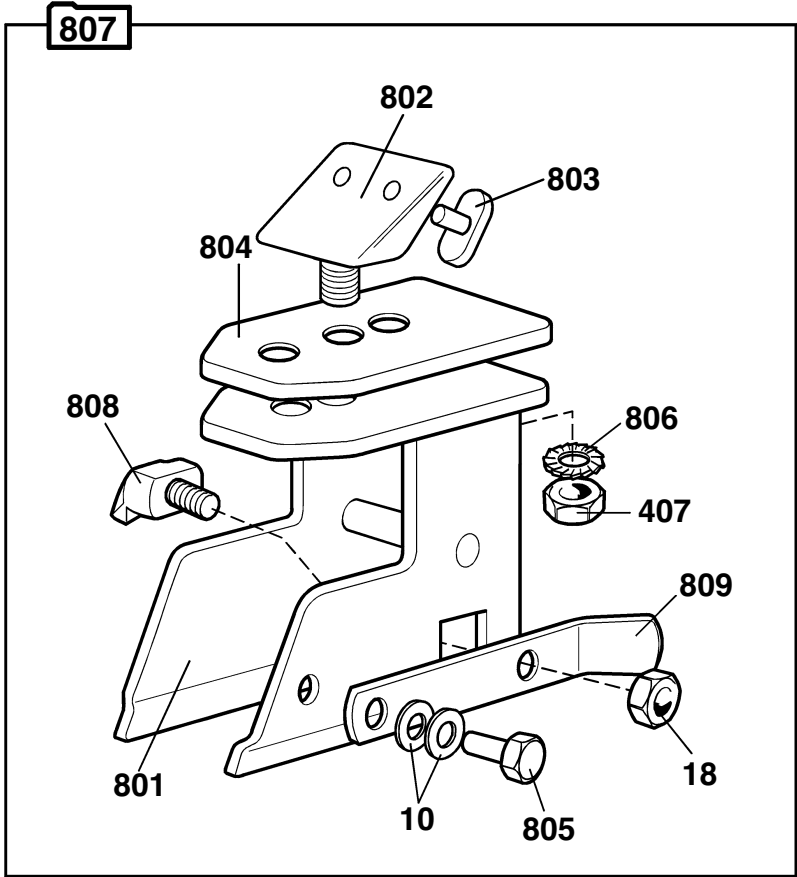


701

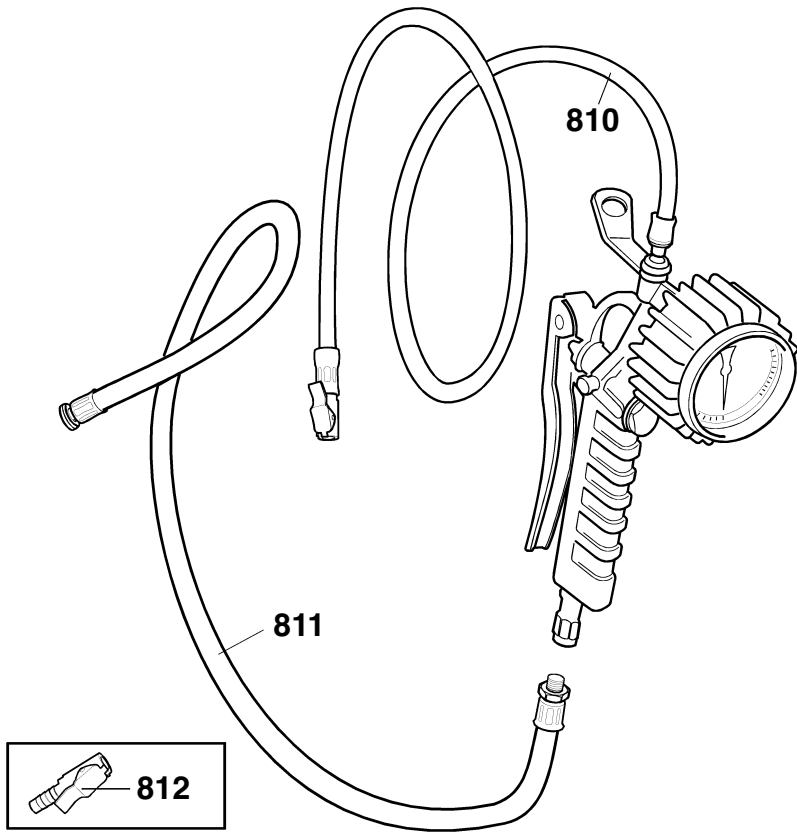


702

MOTORCYCLES WHEELS ADAPTOR



TIRE INFLATING GUN & GAUGE



REF.	CODE	DESCRIPTION
1	2115456	Body
2	3015444	Left panel
3	3015445	Right panel
4	2115500	Front panel
5	3015620	Fixing plate
6	4300574	Screw M 6 x 12
7	4300226	Screw M 8 x 20
8	4300018	Screw M 8 x 12
9	4300019	Screw M 8 x 16
10	4300154	Washer \varnothing 8
11	3010460	Integral wheel support
12	3009516	Tire lever
13	2200091	Tire lube container with cover
14	3014098	Label "ELECTRIC RISK"
15	3015714	Monty 455 label
16	3015483	Pedals label
17	3015484	Bead breaker pedal label
18	4300133	Nut M 8
19	3005690	Rotation arrow
101	2015577	Water separator and press. reg. + lubricator
102	4215581	Water separator and pressure regulator
103	4215582	Lubricator
104	2201156	Complete control valve
105	4214050	Union D8LR
106	4205255	L-union 1/4" 8-6
107	4214580	T-union 1/4"
108	9476932	Quick union 1/4" 8-6
109	4209047	L-quick union 1/4" 8-6
110	4211191	Cap
111	3012163	Adaptor 14 x 1,5 female to 1/4" NPT male
112	4210937	Pressure gauge
113	4300237	Screw M 4 x 50
114	3013980	Pneumatic assembly support
115	4215723	Filter
116	4215724	Filter tank
117	4215725	Lubricator tank
118	4300130	Nut M 4
119	3010470	Pneumatic hose \varnothing 8-6 L=500
120	3005848	Pneumatic hose \varnothing 8-6 L=1000
121	4214780	Control valve
122	2201115	Complete control valve
123	4205816	Union
201	2015590	Complete self-centering turnable
202	2200444	Cylinder \varnothing 75 with unions
203	2200600	Set of gaskets for cylinder \varnothing 75
204	2115591	Turnable
205	3008225	Clamping jaw
206	2201203	Set of 4 slides
207	2115593	Slide with guide
208	2115594	Slide with pin
209	2408694	Control plate

REF.	CODE	DESCRIPTION
210	3093664	Arm spacer
211	4300156	Washer \varnothing 12
212	4300576	Screw M 12 x 85
213	4300186	Seeger ring \varnothing 12
214	4300192	Seeger ring \varnothing 65
215	3005557	Bush
216	4300052	Screw 16 x 1,5 x 35
217	3315621	Turnable cap
218	2200073	Union 1/8" 8-6
219	2200826	Front flange \varnothing 75 with guide WRI 20
220	4209564	O-ring \varnothing 68,26 x 3,53
221	3010665	Casing cylinder \varnothing 75
222	3009563	Rear flange for cylinder \varnothing 75
223	4300071	Screw M 8 x 20
224	4300142	Nut M 12
225	3010677	Washer \varnothing 12,5 x 30 x 3
226	4208231	Piston gasket \varnothing 75
227	3009908	Shaft for cylinder \varnothing 75
228	4300414	Seeger ring \varnothing 30
229	4206523	WRI-20 guide for piston rod
230	4206114	Lipped gasket
231	3009822	Pneumatic hose \varnothing 8-6 L= 54
232	4295016	Union T 8-6
233	3094668	Turnable washer
234	3010912	Washer \varnothing 24 x 29,5 x 0,5
235	2201552	Cylinder \varnothing 75 with unions
236	2201576	Complete self-centering turnable
301	3094377	Bead breaker cylinder cover
302	3094378	Piston return spring
303	3007941	Pneumatic hose \varnothing 6-4 L= 500
304	3011059	Piston \varnothing 186
305	4205257	Lipped gasket DE-725
306	2410965	Bead breaker cylinder
307	3010963	Bead breaker rod
308	3005174	Bush
309	4300080	Screw M 12 x 30
310	3310960	Shock absorber
311	4212845	Silencer 1/4"
312	3005320	Quick return valve
313	4205260	Union 1/8" 6-4
314	2200603	Set of gaskets for bead breaker cylinder
315	4300148	Nut M 18 x 1,5
316	4300578	Screw M 16 x 1,5 x 150
317	4300158	Washer \varnothing 16
318	3008952	Bead breaker spring
319	3010961	Rotating pin
320	3015976	Washer \varnothing 16,5 x 40 x 1,5
321	2200140	Complete blade
322	4300165	Washer \varnothing 8 x 24 x 2
323	3305242	Knob
324	3007326	Washer 13 x 35 x 0,3

REF.	CODE	DESCRIPTION
325	3094971	Screw M 12
326	4300514	Nut M 16 x 1,5
327	2200633	Complete bead breaker cylinder
328	2201157	Complete bead breaker arm
329	3016013	Locking plate
401	4300073	Screw M 8 x 30
402	3305161	Knob
403	3310506	Cover for locking system
404	3011971	Hexagonal arm
405	3005353	Handle with screw
406	3005564	Vertical arm spring
407	4300134	Nut M 10
408	2115441	Vertical post
409	3015495	Washer \varnothing 16,5 x 50 x 1,5
410	3010501	Locking plate for hexagonal arm
411	4300399	Screw M 12 x 30
412	4300409	Flat nut M 12
413	4300020	Screw M 8 x 20
414	3010908	Spacer
415	2201117	Pawl with insert
416	3010505	Plate for cam lever
417	2310947	Lever with handle
418	3015531	Special screw M 16 x 1,5
419	4300028	Screw M 10 x 25
420	3007143	Washer \varnothing 10,25 x 36 x 4
421	2115478	Swinging arm
422	3009851	Claw
423	3005151	Mounting roller
424	4300096	Screw M 6 x 8
425	4300077	Screw M 10 x 25
426	3306864	Mounting head shock absorber
427	2201432	Complete mounting head
428	4300029	Screw M 10 x 30
429	4300095	Screw M 6 x 8
430	3005160	Mounting roller pin
431	3005663	Mounting head
432	3014031	Label "READ INSTRUCTIONS"
433	3014077	Label "EXPLOSION HAZARD" complete
434	4300081	Screw M 12 x 40
435	3309545	Mounting head shock absorber
436	3093674	Roller
437	4210027	Pin \varnothing 5 x 21,8
438	4300076	Screw M 10 x 20
439	4300280	Screw M 6 x 6
440	3014104	Arm label
441	3014078	Warning label
501	3010107	Screw for rotating union
502	4205322	Union 1/8" 8-6
503	4207833	O-ring 60 x 2,62
504	2015170	Complete rotating union
505	3009826	Cylinders hose

REF.	CODE	DESCRIPTION
506	3015501	Pneumatic hose \varnothing 8-6 L= 600
507	4300035	Screw M 10 x 50
508	4300155	Washer \varnothing 10
509	3012603	Upper gear box housing
510	3006086	Lower gear box housing
511	4100004	Roller bearing 6010
512	4210480	Pin \varnothing 8 x 20
513	4100005	Roller bearing 30204
514	4206091	O-ring 4137
515	4210479	Cap \varnothing 35 x 8
516	4300194	Woodruff key 6 x 9
517	3006014	Worm screw
518	4206095	Gasket 2035/10
519	2407827	Gear wheel with support
520	3005201	Gear box pulley
521	4300128	Nut M 10
522	4300066	Screw M 6 X 18
523	4300132	Nut M 6
524	2017423	Complete gearbox
525	4217294	Y-union 1/8" 8-6
526	2017295	Complete rotating union
601	4300065	Screw M 6 x 12
602	4300153	Washer \varnothing 6
603	4300256	Screw M 4 x 16
604	4300169	Tooth washer \varnothing 4
605	3394587	Reverse lever
606	4300085	Screw M 3 x 10
607	4300115	Screw 3,5 x 13
608	4300089	Screw M 4 x 10
609	3311196	Reverse gasket
610	3014661	Reverse support
611	4213369	Motor switch
612	3311195	Switch cover
613	2407448	1-Ph motor connecting cable 110 V.
614	4206664	Strain relief
615	4207394	Strain relief
616	2407446	1-Ph lead-cable 110 V.
618	4215947	1-Ph 110 V. 60 Hz. motor
619	4300099	Screw M 8 x 14
620	3005316	Motor pulley
621	4213294	Belt A 27
622	4300021	Screw M 8 x 25
623	3015515	Motor holder
624	4300579	Screw M 10 x 60
625	4300026	Screw M 10 x 16
626	3307305	Switch cover
701	2015549	Complete bead breaker pedal
702	2015536	Complete pedal assembly
703	3094451	Switch connecting rod
704	4300179	Split pin 2 x 20
705	4300164	Washer \varnothing 6 x 18

REF.	CODE	DESCRIPTION
706	2200930	Switch pedal with plastic insert
707	3009553	Pedal
708	3314621	Plastic insert for pedal
709	2409607	Support for switch pedal
710	3006047	Pedal spring
711	3009407	Connecting rod
712	2406150	Cam connecting rod
713	3006149	Fork leaf spring
714	3306148	Trip cam
715	3015524	Pedal pin
716	3015695	Mounting plate
717	3009412	Spring for pedals return
718	2309657	Complete valve for self centering turnable
719	4300002	Screw M 4 x 25
720	4300138	Nut M 4
721	4293991	Silencer 1/8"
722	4209029	Quick union 1/8" 8-6
723	4209658	T-quick union 1/8" 8-6
724	4300015	Screw M 6 x 60
725	4300139	Nut M 6
726	4300167	Washer M 8
727	4300140	Nut M 8
728	3009605	Connecting rod guide bracket
729	4300215	Screw 2,9 x 6,5
730	2015548	Complete bead breaker valve
731	4300131	Nut M 5

REF.	CODE	DESCRIPTION
732	4215545	Ring ø 8
733	3015540	Pedal pin
734	3015542	Pedal articulation
735	3015544	Valve holder
736	3310066	Rubber pedal
737	2115543	Bead breaker pedal
738	9438253	L- quick rotating union 1/4" 8-6
739	9443019	L- quick rotating union 1/4" 6-4
740	3014052	Pneumatic hose ø 8-6 L= 300
741	4300364	Screw M 6 x 8
742	2201176	Self-centering turntable valve
743	2201177	Bead breaker valve
801	2115667	Motorcycle wheel adaptor
802	3005696	Clamp
803	3305341	Clamp spacer
804	3311344	Alloy rim protection for adaptors
805	4300328	Screws M 8 x 10
806	4300172	Tooth washer ø 10
807	2015666	Complete motorcycle wheel adaptor
808	3009133	Pawl
809	3009134	Leaf spring for pawl
810	2407055	Complete air outlet hose
811A	2407053	Complete air inlet hose (up to 1208 04/98)
811B	2407054	Complete air inlet hose (from 1209 04/98)
812	4205451	Inflating valve
		14



HOFMANN USA

P.O. Box 178157 Nashville, TN 37217 Phone 615-331-7851 Fax 615-331-8176
www.hofmann-usa.com

HOFMANN BALANCING TECHNIQUES LTD. CANADA

39 Dussek Street P.O. Box 1270 Belleville, Ontario K8N 5E9 Phone 613-962-9138 Fax 613-962-8302
www.hofmann.ca